

PERMANEO

## Introduction to Permaneo

Industrial floors are subject to heavy stress, wear and tear and damage due to unpredictable operations as well as failures due to defects in design or construction.

The impact of the wheels from the handling equipment can lead to progressive deterioration of the seals. Traffic and movement of pallets or crates can cause accelerated abrasion of the surface. Machines or falling tools can cause impacts and indentations on the ground.

Damage to industrial floors is unsightly but worse still, affect the smooth running of operations and it can be very expensive for the end user both in terms of productivity and the consequences on the production process.

Permaneo provides industrial floor repair, renovation and maintenance services to help homeowners and facility operators to optimally manage these impacts and improve their efficiency and performance while meeting fundamental quality criteria.



[www.rcrindustrialflooring.com](http://www.rcrindustrialflooring.com)

Permaneo's mission is to help owners and operators of industrial buildings save time and money with well-maintained floors.

The Permaneo brand was created by RCR Industrial Flooring to meet the increased market demand for industrial floor repair and maintenance services.

Permaneo has its own international team of experts in the diagnosis and solving of concrete floor problems for logistics, industry and commercial surfaces.

The team is also working closely with its colleagues at RCR to leverage their experience and provide relevant and optimised solutions for concrete slab repairs and maintenance.

Permaneo's specialised teams adapt to the needs and constraints of industrial, logistic and commercial operators by remaining available and flexible for night-time, weekend or holiday operations to minimize the impact of their interventions on the productivity of its customers.

Permaneo uses the well-known brands of RCR in its services, in particular RINOL resins, Rocland surface hardeners, Permaban construction joints and sealing joints. These brands are a guarantee of quality and durability of the works.

For more information:  
[www.permaneorcr.com](http://www.permaneorcr.com)



Industrial floor repair, renovation and maintenance



**PERMANEO UK**  
A trading name of RCR Flooring Products Ltd  
C/o Unit 1C, Mill Close, Lee Mill Industrial Estate,  
Ivybridge, PL21 9GL, UK

Tel.: +44 (0) 1752 895288  
Email contact: [info@permaneorcr.com](mailto:info@permaneorcr.com)  
[www.permaneorcr.com](http://www.permaneorcr.com)



@permaneoUK

UK - FRANCE - SPAIN - PORTUGAL  
CZECH REPUBLIC - MOROCCO - SOUTH AFRICA  
MEXICO - PANAMA - URUGUAY - PERU  
COLOMBIA - BOLIVIA - PARAGUAY - CHILE

Industrial floor repair, renovation and maintenance

## Industrial floor maintenance, repairs and renovation.



# RCR Flooring Services



Permaneo is part of the Flooring Services division of RCR. Permaneo is very complementary to Monofloor which belongs to the same division.

Monofloor is an internationally recognised consultancy and consultancy firm for its expertise in industrial floor engineering.

Monofloor deals with the design and execution quality of concrete slabs. The two companies collaborate closely in technical matters and Permaneo benefits from Monofloor's services for specialised services such as static calculations of old pavement, defects diagnosis or flatness control before the commissioning of high-bay storage carts.

Monofloor UK  
Mill Close  
Lee Mill Industrial Estate  
Ivybridge  
Devon PL21 9GL  
T: +44 (0)1752 895288  
www.monofloor.com



# Maintenance

The maintenance of the pavements protects the investment of the company. Regular maintenance identifies problems quickly, avoids problems that may affect operations, and reduces remediation costs.

We offer audits, scheduled annual maintenance contracts and reactive maintenance, which generally include:

- ◆ Change of filling joints
- ◆ Injection of cracks
- ◆ Superficial treatments (ex: stains removal, waterproofing, spot sealings)
- ◆ Localised application of filler or wax

# Repair

**Permaneo services include:**

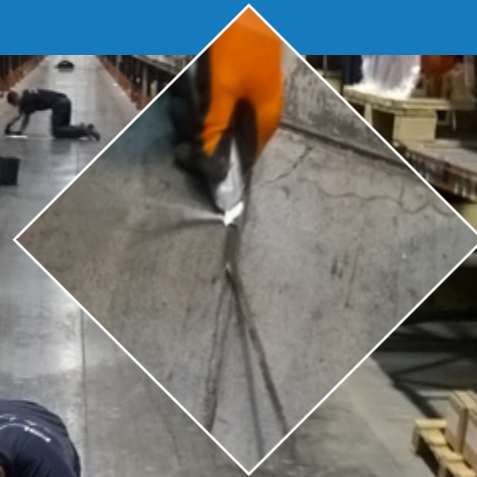
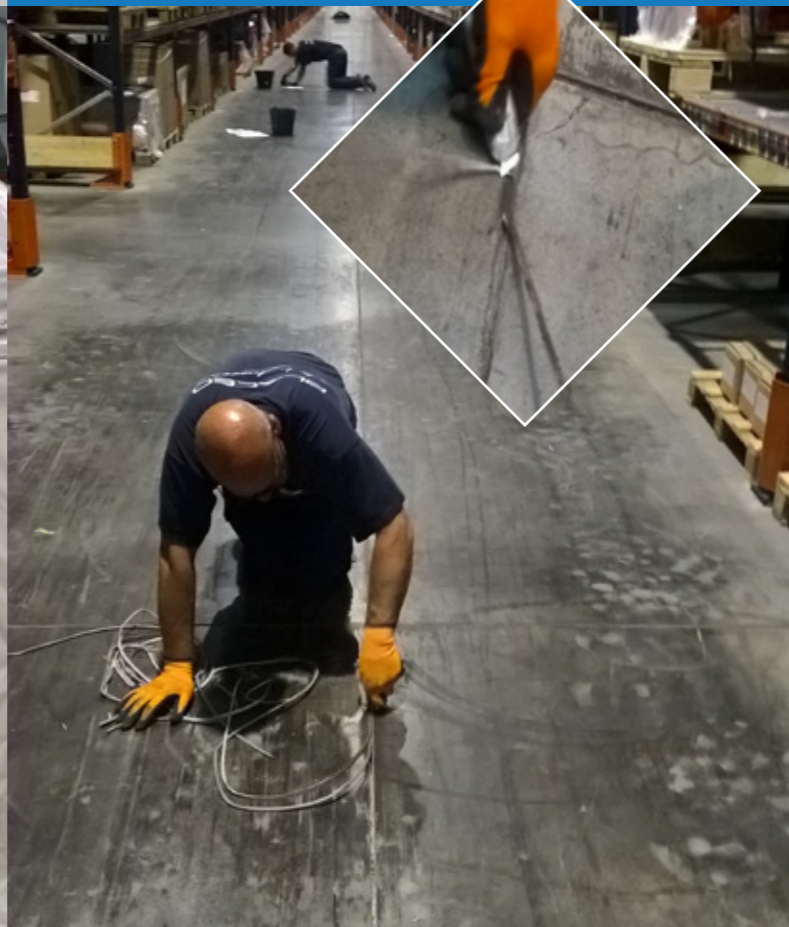
- ◆ Repair of construction joints (or sawed joints). After diagnosis and possibly slab stabilization if necessary, we carry out permanent and professional repairs using the exclusive Permaban Signature AR system, which protects against damage from future impacts. We also repair sectional doors and thresholds.
- ◆ Repair of cracks. We diagnose and solve cracks problems by treating problems at the root, not superficially. By using RINOL brand resins, we treat cracks permanently with an almost indistinguishable appearance.
- ◆ Impact Damage Repairs: We perform localised repairs using RINOL mortars and resins.
- ◆ Slab stabilization : restores slab support and avoids pumping of concrete floor under traffic over joints

# Renovation

Our renovation services consist of removing and replacing heavily damaged surfaces. These services are less expensive, less invasive and more environmentally friendly than a new concrete floor.

We use different techniques according to the causes identified and the result sought:

- ◆ Polishing: We implement DRT (Diamond Rotating Technology) systems to restore and preserve the shine of the soil surface and prevent the appearance of dust (DRT Light / DRT Polish / DRT Deco)
- ◆ Cementitious coatings: We can implement a range of solutions to restore flatness, increase durability and improve aesthetics by using RCR manufactured products such as Rocland Qualitop VRS (slurry), Indurit Flow and Suelastic.
- ◆ Synthetic coatings: Whether it is setting up a security marking or completely renovating a floor, we have with the RINOL brand a complete range of resin systems (epoxy, PU, acrylic, PMMA) for industrial or architectural uses.



**Permaban Signature AR Joint Repair System**

